

VP BUILDINGS

VARCO PRUDEN



Nadeau Corporation
CONSTRUCTION DEVELOPMENT ENGINEERING
Pre Engineered Metal Building Division



Introduction to Varco Pruden Buildings

Varco Pruden Buildings is a world leader in innovative pre-engineered steel building systems. Each year, VP supplies approximately 6,000 buildings ranging from 1,200 square feet to more than one million square feet under roof. Nadeau Corporation is proud to be an independent Authorized VP Builder and offer state-of-the-art design/build services to our many clients who can benefit from this type of construction.



Fitchburg Gas & Electric Emergency Operations Center-Lunenburg, Ma (KITE Architects)

Common Uses for Pre Fabricated Metal Buildings

Steel buildings have come a long way. While warehouses and vehicle bays still greatly benefit from this type of construction, we're seeing more and more applications being explored. With the areas top architects, Nadeau can combine the structural materials with virtually any exterior finish to create beautiful buildings for many end-uses.

| | | | |
|-------------------------|---------------------------|-------------------------|--------------------------|
| Agricultural Facilities | Auto Dealerships | Distribution Facilities | Government Buildings |
| Houses of Worship | Hybrid Structures | Manufacturing Plants | Miscellaneous Structures |
| Office Buildings | Retail Spaces | Retrofit Projects | Schools |
| Self-Storage Facilities | Transportation Facilities | Warehouses | Athletic Facilities |

How You Benefit

The goal of Varco Pruden and Nadeau Corporation is to create *aesthetically appealing buildings with optimum functionality*. This delivery methodology has numerous benefits to the client. Some of which include:

COST SAVINGS: Steel systems construction can generate substantial savings of up to 30% in overall construction costs. Where do these savings come from?

- Construction time cycles are often up to 1/3 less than other methods.
- Faster occupancy and quicker return on owner investment.
- Standardization and computer-assisted design reduces time spent on planning, on-site organization, and construction.
- Insulated roof and wall systems can significantly reduce HVAC costs.
- Faster project estimating
- Simplified design and code process
- One-source coordination with streamlined delivery
- Reduced maintenance and diminished deterioration, cracking, rot, and insect damage
- Easy expansion to accommodate growth

VERSATILITY: Steel systems construction can be used for a wide variety of buildings. We can combine the steel structural materials with virtually any exterior finish to create metal buildings that are energy efficient and provide years of trouble-free performance for end users ranging from warehouses to offices to churches.



8,100 square foot Pre Engineered Metal Building Gymnasium- New Bedford, Ma



How You Benefit

BUILDING GREEN:

Going Green is a combination of design and construction practices that notably reduce, and in some cases eliminate, certain perceived negative impacts a building may have on the environment and occupants. Nadeau's goal for these projects is to not only create a high-performance building, but one that will actually improve the local and global community.

For a building to meet the parameters of sustainable design, its plan and construction must include built-in design features and materials that enhance the following:

- Energy efficiency and renewable energy
- Safeguard water and water efficiency
- Conservation of materials and resources
- Indoor environmental quality

VP Buildings can contribute significantly toward your project's energy efficiency certification in areas of:



- Recycled content
- Recyclability/Reuse in the future
- Energy Efficiency-Cool Roof Materials
- Proximity of VP manufacturing facilities to job sites



Recycled Materials—VP's steel frames, secondary and sheeting contain recycled steel. This is one of the components of LEED point eligibility.

Reusable or Recyclable Materials—All of VP's steel components are made of 100% reusable/recyclable alloy. VP metal buildings can be relocated and reused, providing expanded adaptability for different end uses and greatly extending their usable life.

Energy Efficient—VP Buildings offers an ever-expanding range of code compliant, efficiency-enhancing structural components. The ThermalClad Insulated Wall & Roof Panels are ideal for controlled-environment buildings where temperature and insulation are critical. And their superior insulating value is maintained throughout the life of the building (R-values to 32.3 available). VP buildings are compatible with a large variety of insulation options to achieve maximum thermal efficiency.

Cool Roof colors- VP Buildings was one of the very first manufacturers to introduce "Cool" colors for roofing panels.

Designs And Building Systems That Reduce Materials Use AND Waste—The VP Command® Computer System that Nadeau uses is the most advanced computerized design system in the industry. What does that mean for your next sustainable construction project? It means that you can notably reduce design and estimating time, accurately detail the building structure, and efficiently process the material through manufacturing.



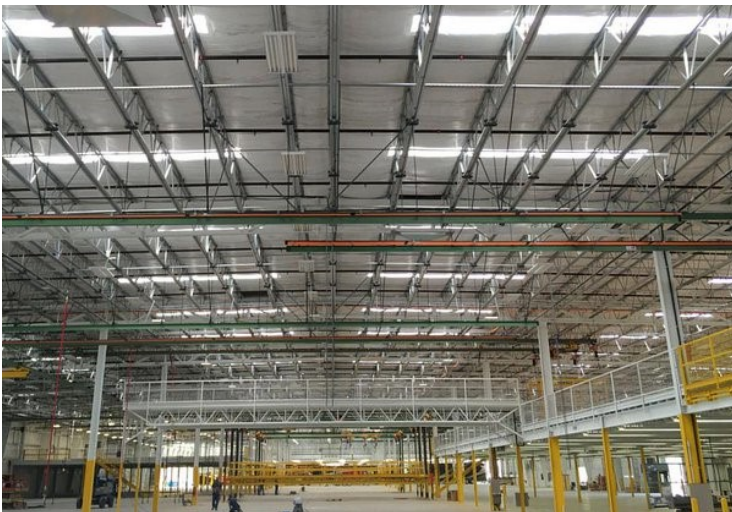
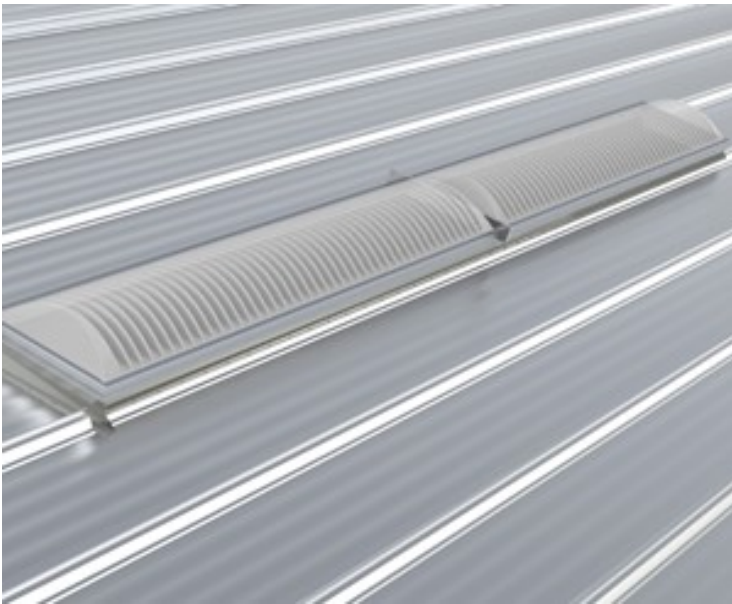
How You Benefit

VARCO PRUDEN GREEN PRODUCTS:

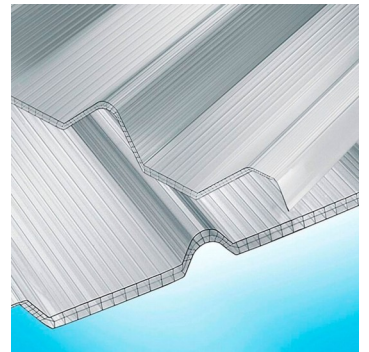
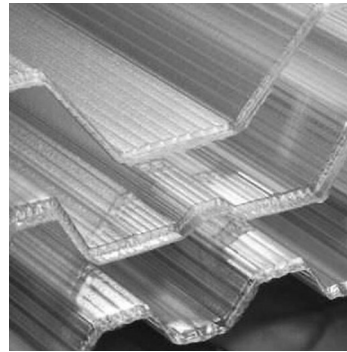
Together with Varco Pruden, Nadeau Corporation can implement an ever growing number of products that contribute to “going green.” What we strive to accomplish is to increase natural lighting & decrease power usage to provide notable savings on energy costs.

Natural lighting options- Power for electrical lighting is one of the largest energy costs in most commercial buildings. According to the U.S.G.B.C., 37% of energy consumed in buildings is directly tied to lighting. Equally important, research has shown that natural lighting from passive sources such as windows and roof top skylights has a positive effect on student performance in school, better employee satisfaction at work and even improved sales results in retail stores.

[PrisMAX SL skylights](#), featuring a prismatic lens system for maximum light dispersal

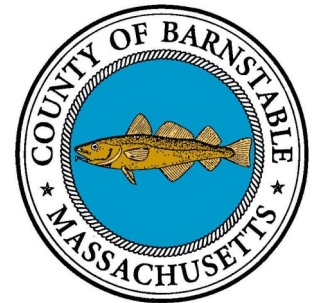


[Translucent Tuf-Lite & Wallite panels](#), provide the interior with 60% natural light transmission.

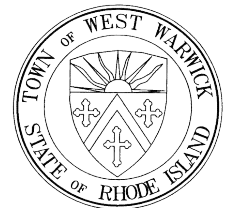




Some of Nadeau's valuable clients who use Varco Pruden Buildings



• TRUSTED QUALITY SINCE 1921 •





VP BUILDINGS
3200 Players Club Circle
Memphis, TN 38125
Tel. (901) 748-8000
www.vp.com

To Whom It May Concern,

I believe Nadeau Corporation has the necessary capabilities and experience in the steel building industry to complete projects on time and within budget.

Nadeau Corporation has been performing complex construction projects in the New England area for the past 30 years, and Varco Pruden has been a valued partner of Nadeau Corporation for over 15 of those years; together we have accomplished projects varying in size, scope, and complexities.

I hope this helps you in your decision making process. If you have any questions or concerns please don't hesitate to contact me.

Regards,

David English
Corporate Account Manager
VP Buildings
(901) 568-4537
denglish@vp.com



Want to learn more?

Contact Nadeau Corporation today to schedule an introduction meeting. You'll get to meet some of our team, introduce what you may be thinking about for your project, and learn more about Varco Pruden Building Systems. These meetings are always relaxed, have no strings attached, and serve as a great tool to find out if a VP pre-engineered system would lend itself to your needs and wants.

Contact Sean Lamontagne at sl@nadeaucorp.com or at 774.274.3822

